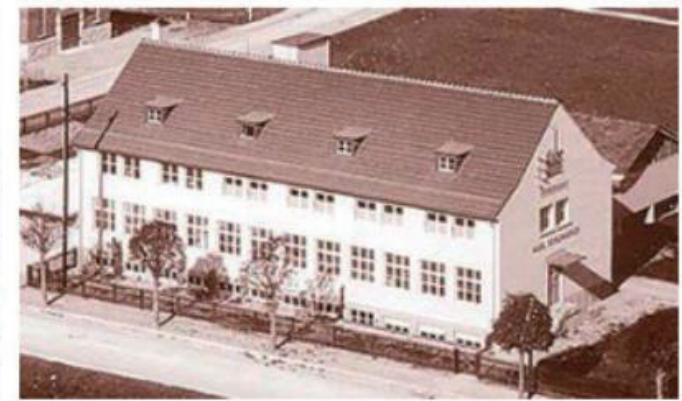






Expertise in renovations of historical
buildings and monuments
since 1908





 **TERRIX[®]**
renders

 **TERRIX[®]**
adhesives

 **TERRIX[®]**
primers

 **TERRIX[®]**
renovations

 **TERRIX[®]**
external paints

 **TERRIX[®]**
internal paints

 **TERRIX[®]**
internal primers

 **TERRIX[®]**
plasters

 **TERRIX[®]**
insulations

 **TERRIX[®]**
accessories

 **TERRIX[®]**
stones & bricks



Advantages of heritage building materials:

- natural resistance to algae
- long lasting colours
- resistance to hairline cracks
- bonding to substrate by chemical reaction
- chemical drying

Problems:

- difficult application
- product price

POLYMER-SILICATE

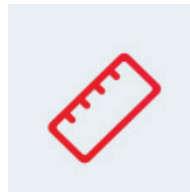
- high resistance to algae
- long lasting colours - non organic pigments only
- bonding to substrate by chemical reaction - no risk of flaking or delimitation
- partly chemical drying - suitable for winter applications
- extended dirt resistance - no surface electrostatics
- sprayable version available - 5 times faster application, no plasterers required to apply, start-stop application possible, lower material usage, better visual effect, less expensive maintenance
- full vapour permeability
- very low water absorption
- simple application
- very competitive price



SYSTEM MAIN PROPERTIES



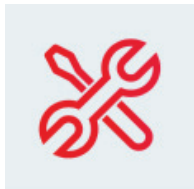
light weight



small thickness



can be recoated



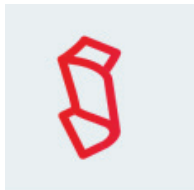
easy installation



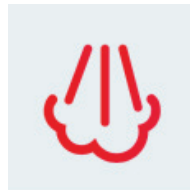
**water and frost
resistant**



algae resistant



high flexibility



**vapour
permeable**



great value



TEXTURES



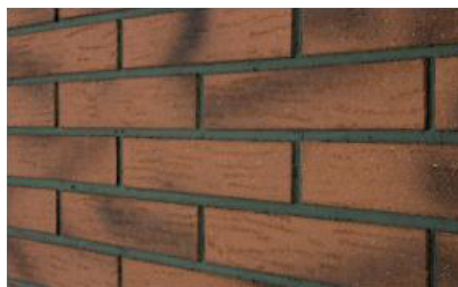
smooth

old brick



slate effect

stone effect

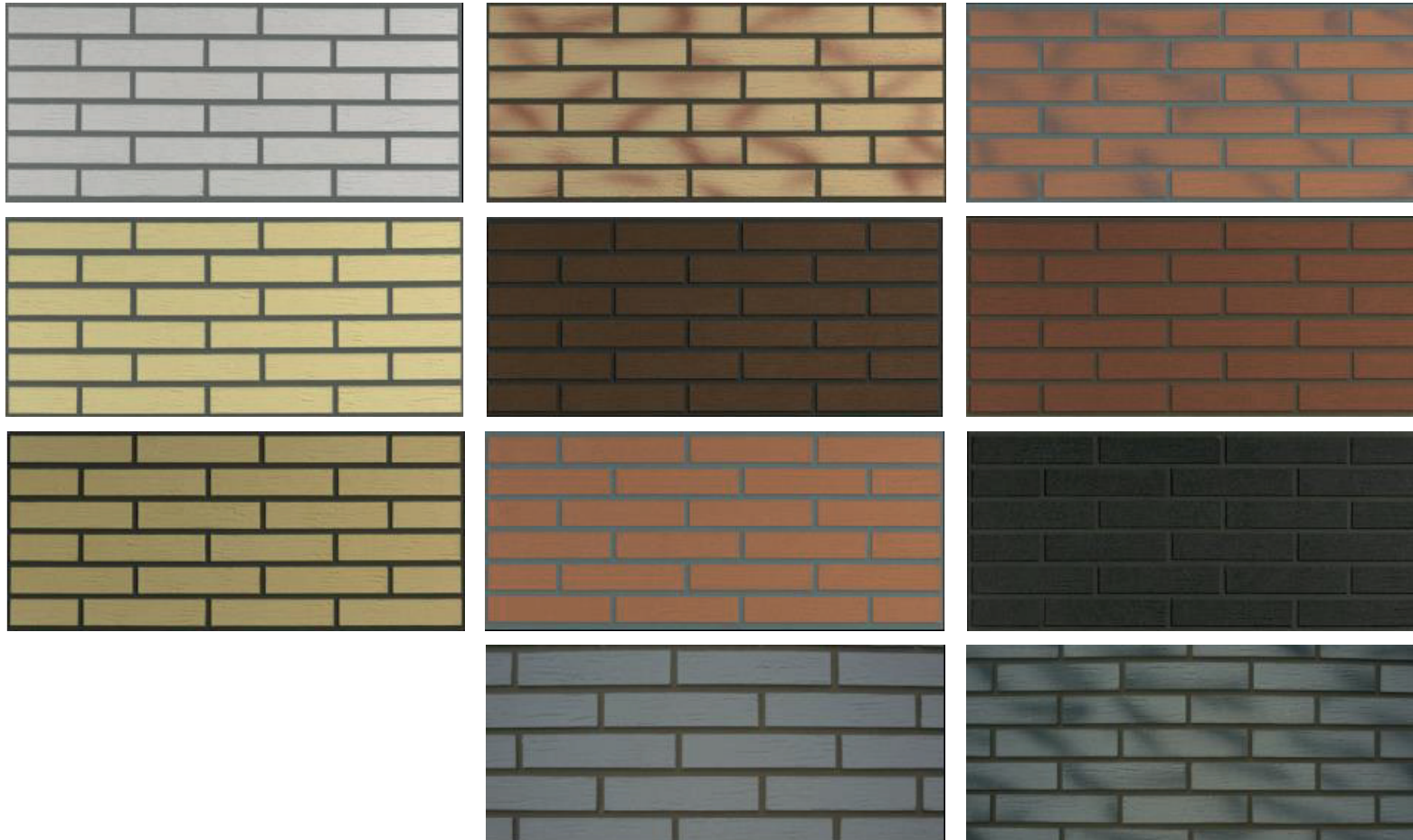


rustic

Duch mix



STANDARD COLOURS



by eliminating cavity timber frame can be reduced to 96mm!!!



TERRIX® BRICK - installation

REQUIRED TOOLS:



spirit level



pencil



small paintbrush



scissors



notched trowel 4mm



measuring tape



1



2



3



4



5

TERRIX® AD-AX over 100J of impact resistance

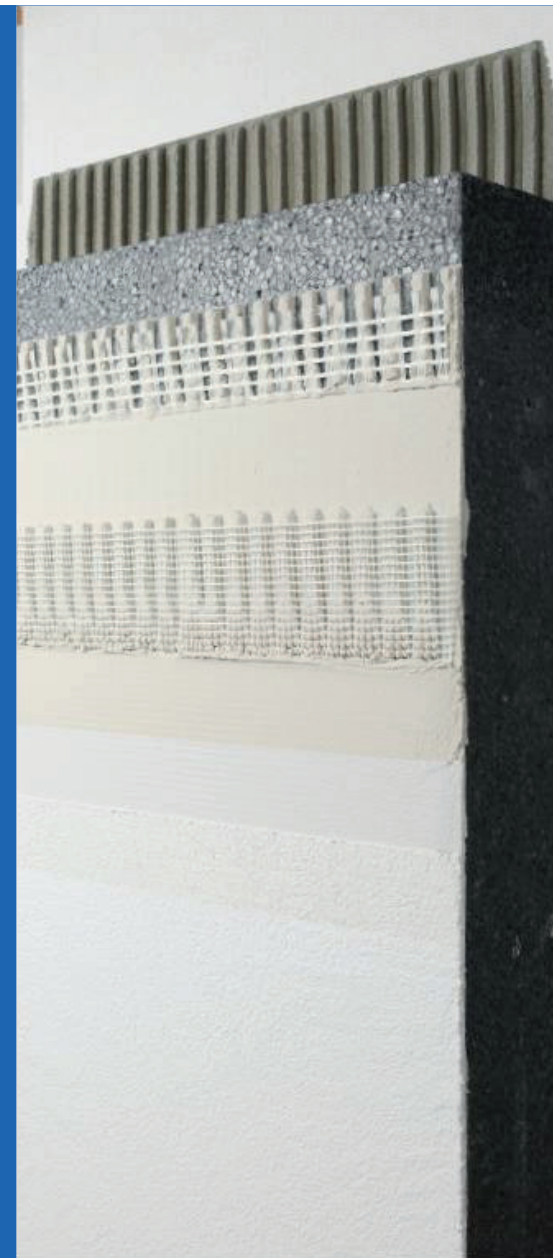




TERRIX® AD-AX

EWI SYSTEM more 10 times more resistant for impact than CATEGORY I by ETAG 004

With our special polymer based base coat we have achieved over 100J of impact resistance.
Our Systems based on Terrix® AD-AX are resistant to almost any form of vandalism



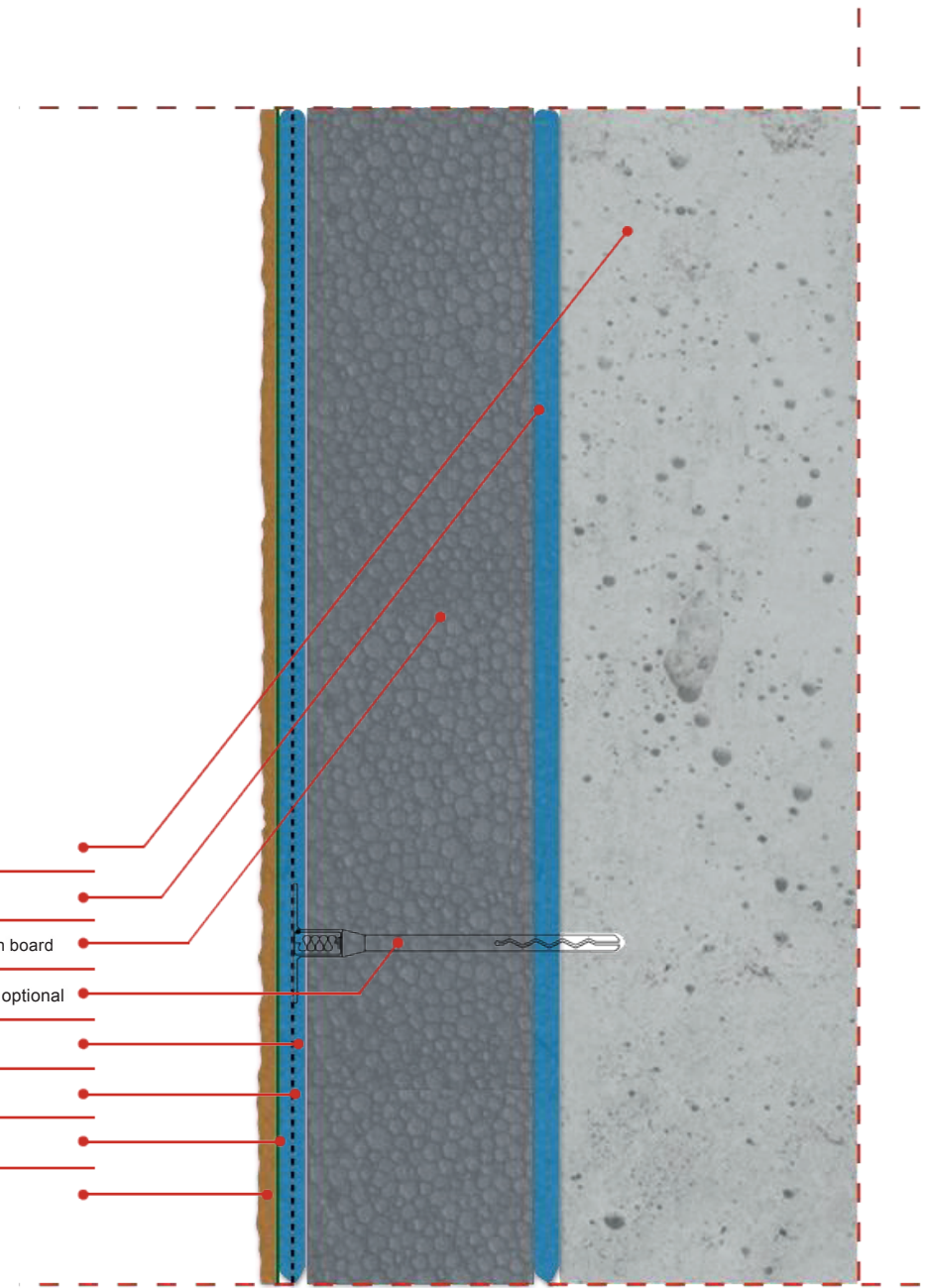


External Wall Insulation Systems:

- wide selection of finishes: mineral, acrylic, silicate, silicone, polysilicate
- algae resistance
- maintenance free (optional)
- annual inspection not required (optional)
- winter application possible
- wash off resistance (optional)
- impact resistance up to 100J
- tailored solutions for each project



- 1 Substrate
- 2 Terrix® adhesive
- 3 EPS/ PUR insulation board
- 4 Mechanical fixing - optional
- 5 Terrix® base coat
- 6 reinforcing mesh
- 7 TERRIX® primer
- 8 Terrix® finish coat



system based on our patented vapour permeable EPS and vapour permeable brick slip

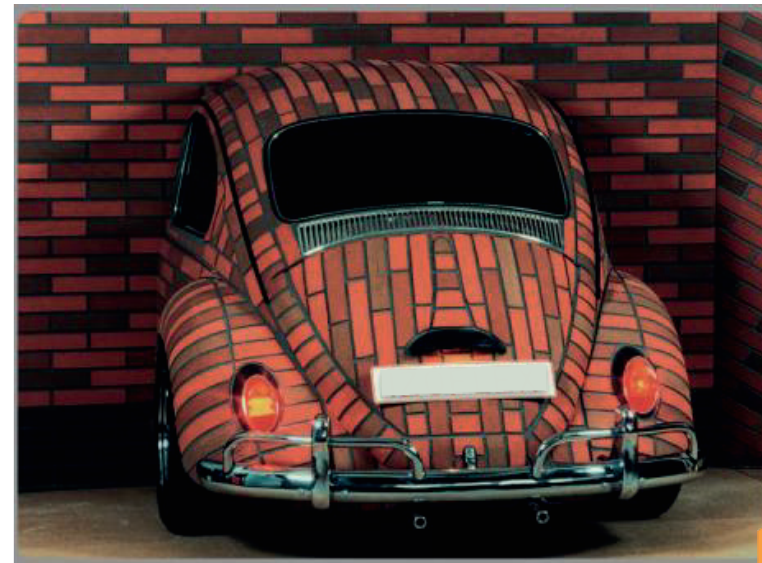
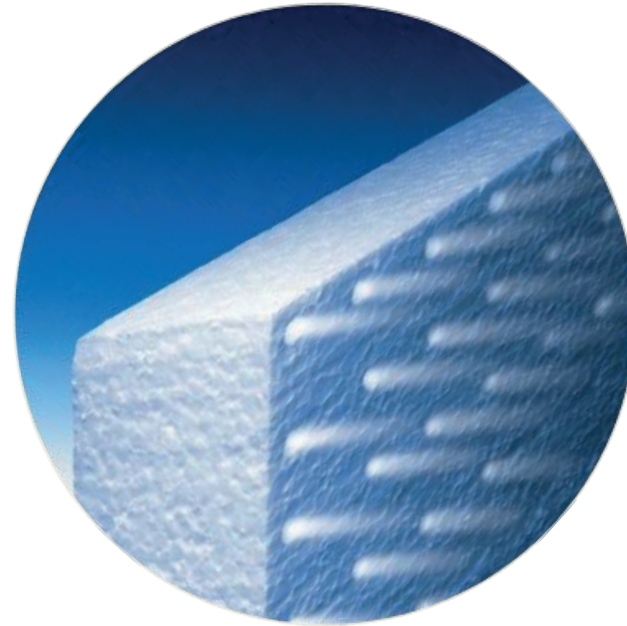
According to informations received from government agencies and confirmed by BBA, in the very near future, the UK government is planing to allocate new large portion of ECO (Energy Companies Obligations) funds towards very vulnerable segment of the market that were never addressed before - TIMBER FRAME STRUCTURES.

BBA confirmed that PCC would put itself in the prime market position by an introduction and certification of an EWI systems suitable for timber frame. Most of our competitors are trying to get into that market but due to the lack of technical solutions / systems most of their efforts are failing so far.

PCC KLIMA THERM - due to its exceptional levels of vapour permeability, would be a perfect solution for timber frame buildings in the U.K.

"Timber frame market may be a gold mine for PCC therefore I am strongly recommending you apply for BBA certification"

(source: Has Mukh Chauhan - Project Manager - Construction Products, British Board of Agreement, September 2016)



System design:

- PCC to provide specific design for each archetype of each project.
- PCC to assist on moisture assessment of properties - free of charge.
- PCC to provide u-value calculations and dew point calculations.

Technical support:

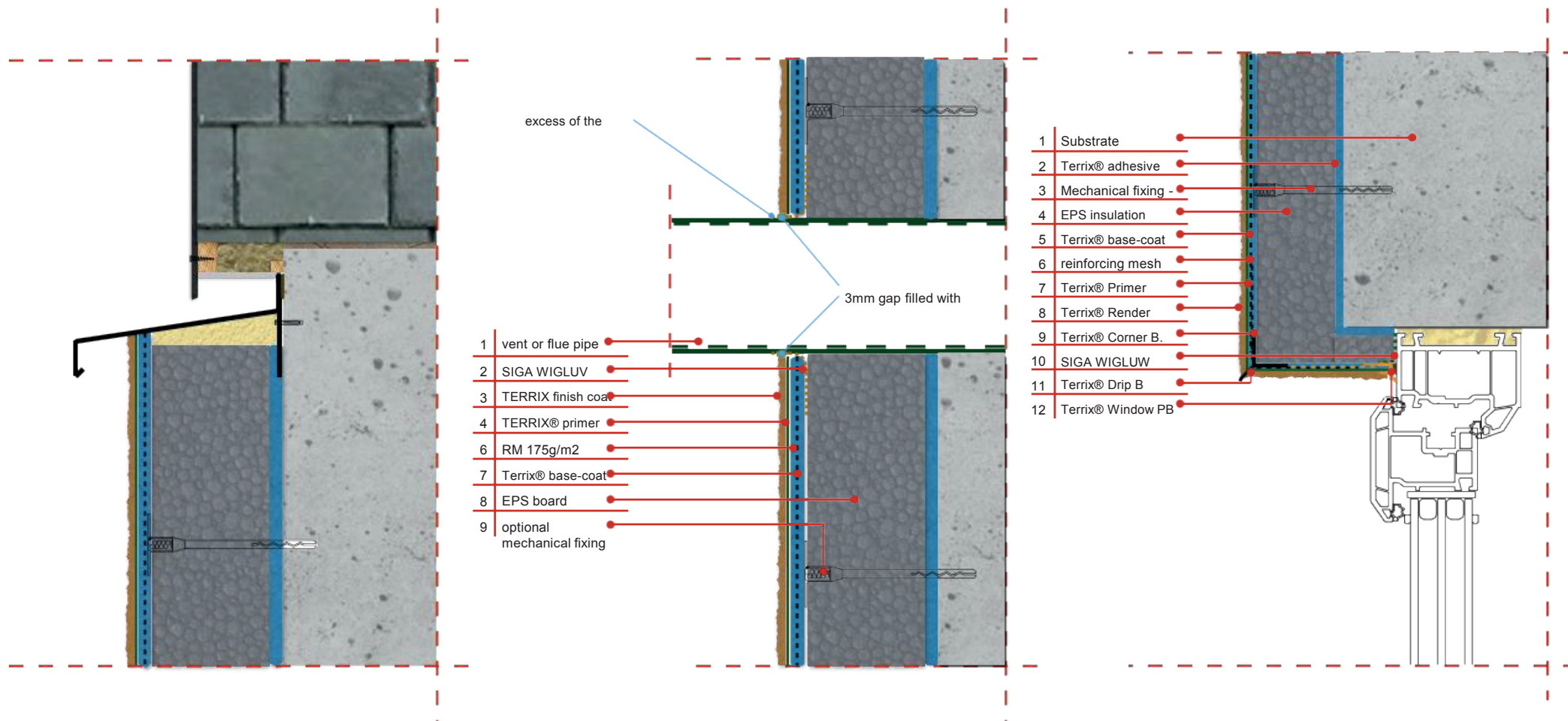
- PCC to provide site specific training for MC and client's site personnel - free of charge.
- PCC to provide on site system training for each operatives.
- PCC to provide free weekly site inspections.
- PCC to provide SITE DIARIES for each property in schemes.
- PCC to introduce 48h solution solving rule.

Maintenance/ system guarantee:

- PCC POLYMER-SILICATE spray application allows spot repairs
- lower maintenance cost.
- PCC system design does not include any silicone sealants - therefore annual inspections are not required.

Service free detailing
no silicone

Service free/silicone free details



Terrix®
the most advanced
products, systems and
customer support

